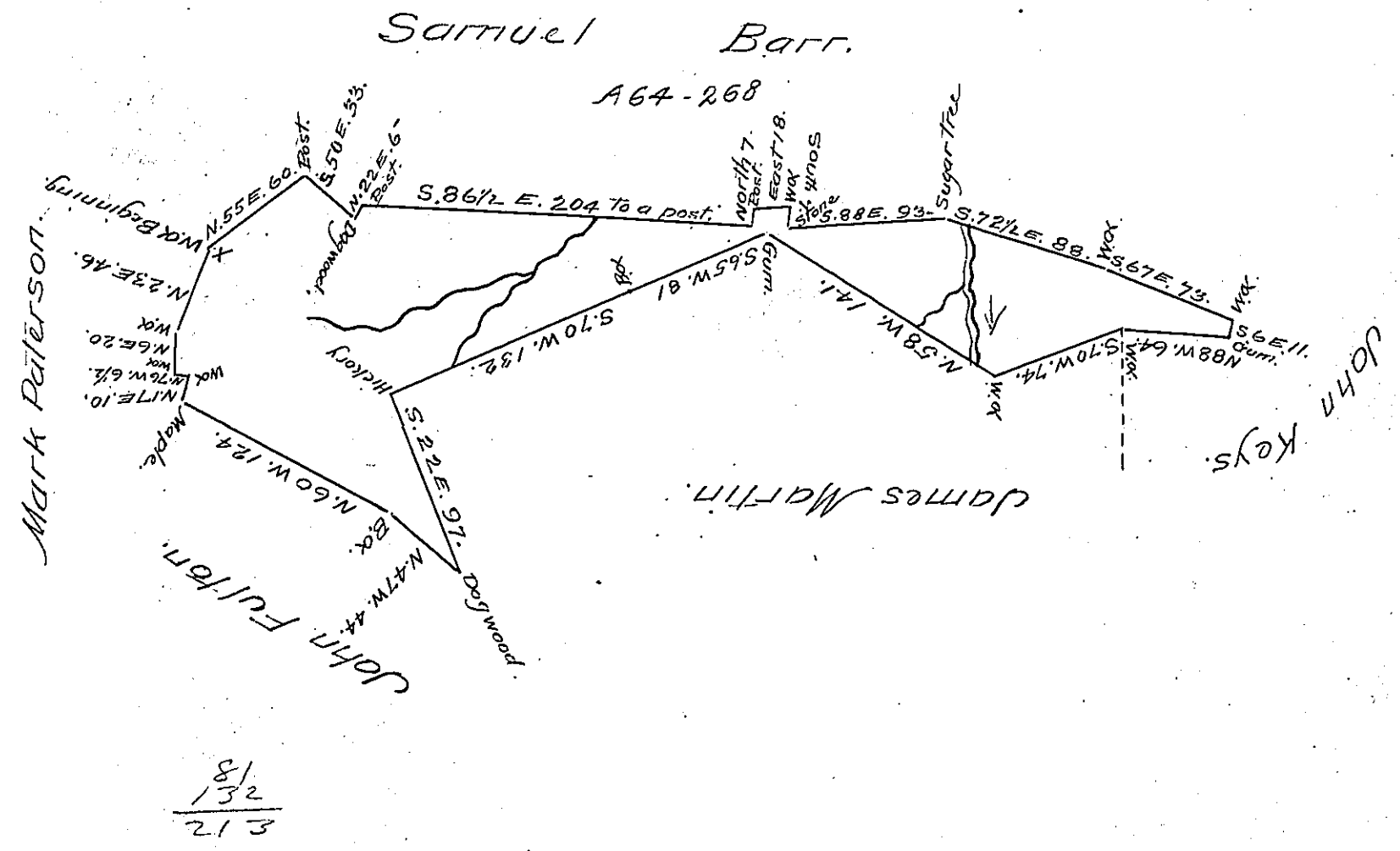


204  
18  
93  
---  
315



A Draught of a Tract of Land Surveyed the 9<sup>th</sup> day of August 1801 for Daniel McFarland jun. by virtue of his warrant for 200 Acres of Land Dated the 18<sup>th</sup> day of April 1796 Situate in West Bethlehem Township - Washington County on the waters of Ten Mile Creek Called Hard Scrabble Containing one hundred eighty nine acres & fifty three perches Together with the usual allowance of Six Percent for Roads.

To Samuel Cochran Esq. }  
Surveyor Genl. of Pennsylvania } Jonathan Leet D.S.

IN TESTIMONY that the above is a copy of the original remaining on file in the Department of Internal Affairs of Pennsylvania, made conformably to an Act of Assembly approved the 16th day of February, 1833, I have hereunto set my Hand and caused the Seal of said Department to be affixed at Harrisburg, this twenty second day of December 1905.

*Richard J. Brown*  
Secretary of Internal Affairs.